

# Remote Desktop for Apple (employees only)

This help screen is for accessing your PTS computer at work from your home using an Apple computer at your home.

Apple Remote Desktop can be used, but it costs about \$80.

Microsoft Remote Desktop is free. This help screen focuses on Microsoft Remote Desktop.



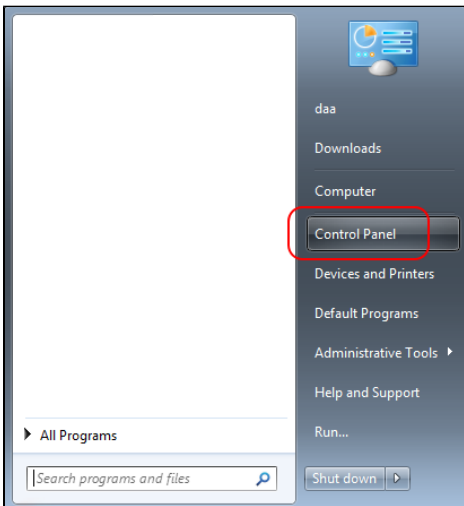
Remote Desktop cannot start your computer; your PTS computer must be running in order to access it.

Your PTS computer must not be set to go into either sleep or hibernation mode. Remote Desktop cannot wake them.

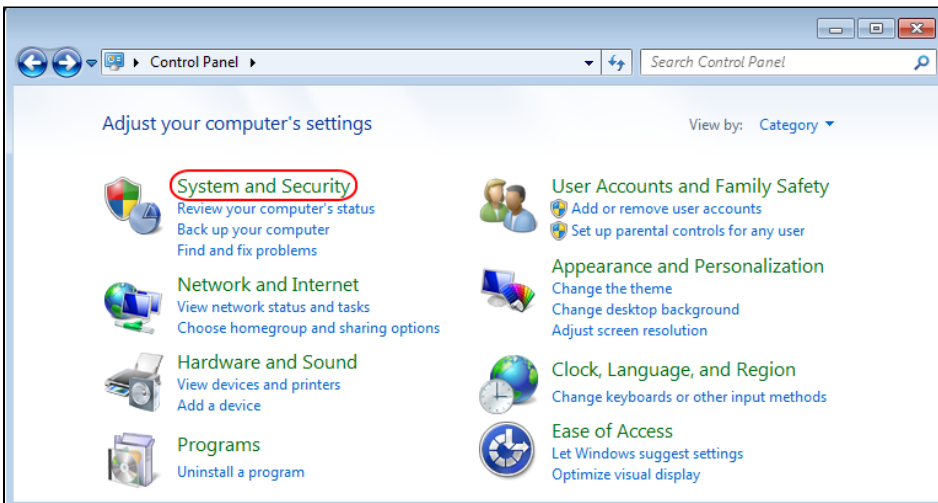
## From your PTS work computer:

You will need your PTS computer name and your computer's domain name to connect.

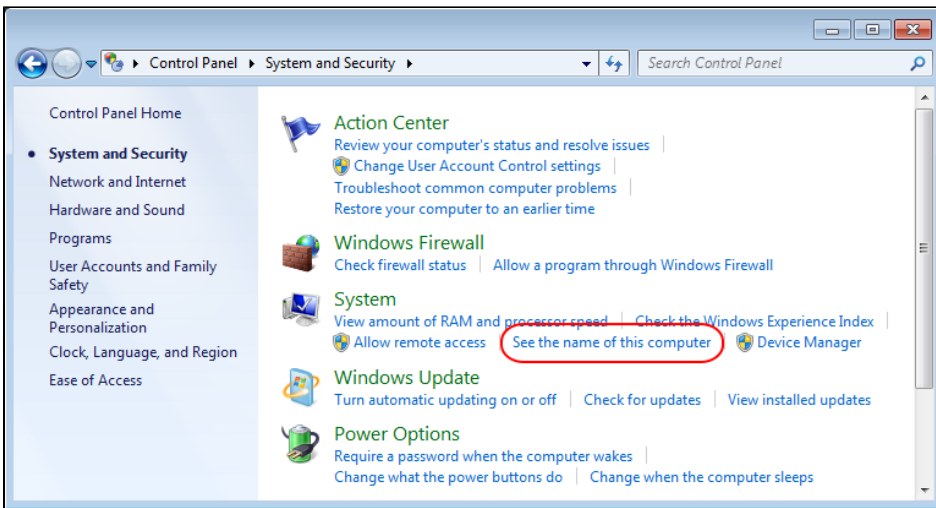
On your work computer, click **Start > Control Panel**.



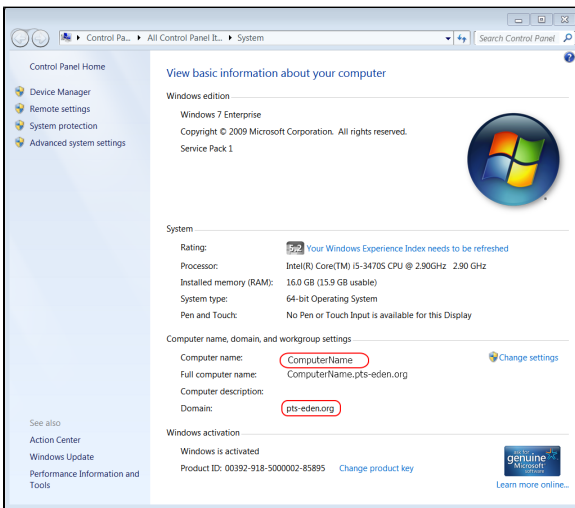
Click **System and Security**.



Click **See the name of this computer**.



You will see your computer's name and the domain (probably "pts-eden.org"). Save these.

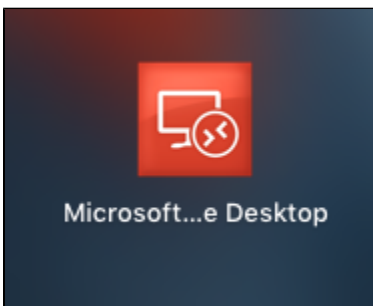


## At your home computer:

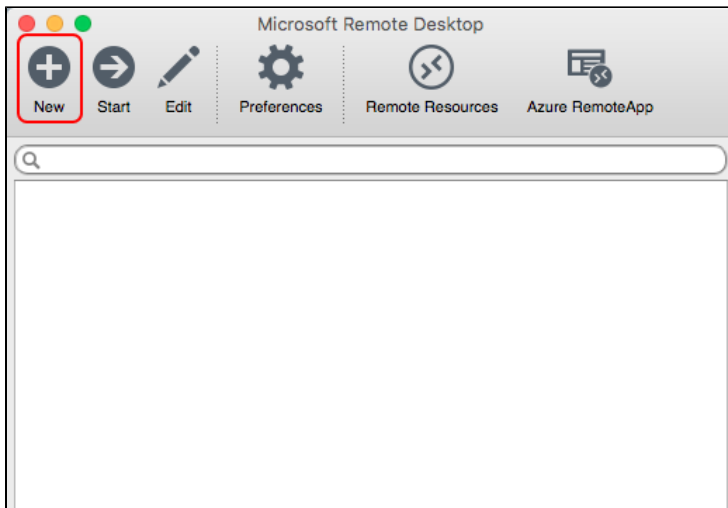
### To configure Remote Desktop:

Install Microsoft Remote Desktop from the Apple store.

Click the icon in the Launcher to start Remote Desktop.



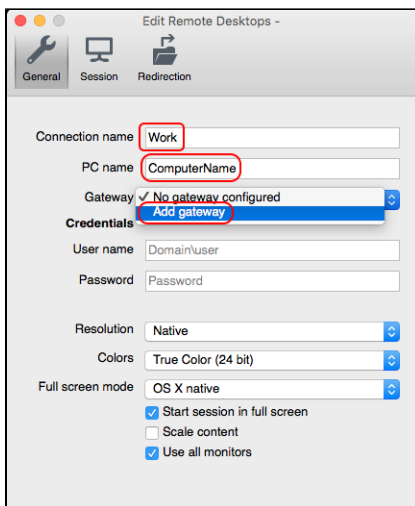
Click **New**.



Enter a "Connection name". This can be anything; it is just for your reference.

Enter your PTS computer name.

Click **Add gateway**.



Click the plus sign (+) on the bottom left of the screen.

Enter a "Gateway name". Again, this can be anything.

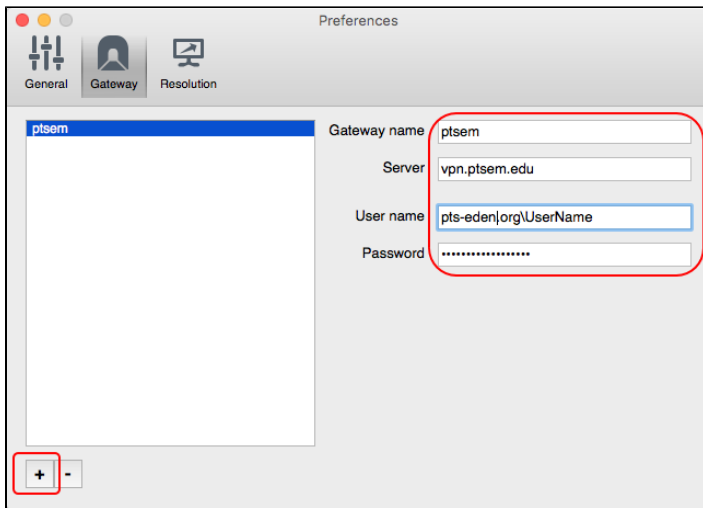
Enter the information obtained from your PTS computer in the following form:

Server: vpn.ptsem.edu

User name: pts-eden.org\UserName

Password: (your PTS password)

Close this screen.



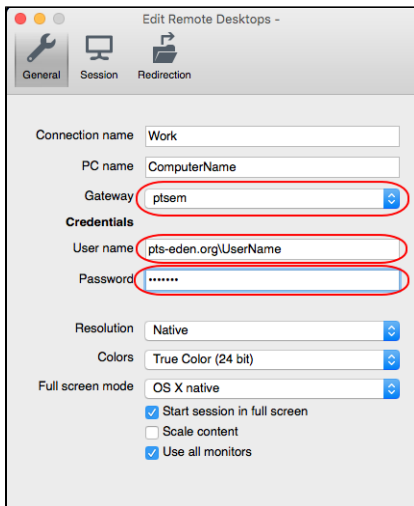
Be sure "ptsem" (or whatever you entered as the "Gateway Name" above) is showing. It will not automatically show.

Enter the information obtained from your PTS computer in the following form:

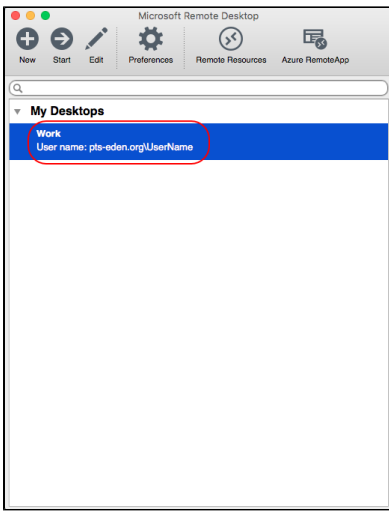
User name: pts-eden.org\UserName

Password: (your PTS password)

Close this screen.



Click on the new connection you just created to access your PTS computer from home. You are in.



When you are connected, place your mouse pointer at the top of the screen to exit.

